

Plug and Play Modules and Adapter Plates

Siemon Plug and Play Modules

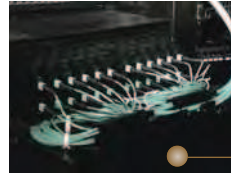
Siemon LC to MTP® and SC to MTP Plug and Play modules provide a quick and efficient way to deploy up to 24 LC or 12 SC fibers in a single module. These factory terminated and tested ports are protected within the housing for reliable high performance and simply connected via 12-strand MTP ports. Modules are available in Multimode (62.5/125, standard 50/125 and XGLO® laser optimized 50/125 OM3/OM4) and Singlemode cable.

Compact Housing — Reduces mounting depth for greater cable management space within enclosures

Optimized Adapter Spacing — Enables easy finger access to fiber jumper connector latches in high density patching environments

Durable and Lightweight — High-impact molded plastic body with single-finger access


Multimode and Singlemode Modules — Utilize zirconia ceramic sleeves for optimum performance



Recessed Base — Allows cable to be fit under the modules for added cable management space when installed in the horizontal orientation (i.e. within FCP drawer)




Compatible with Existing Siemon Enclosures — Fits within RIC, FCP and SWIC Siemon fiber enclosures and VersaPOD® vertical patch panels



PP2-12-(XX)(X)-01(X) 12 Fiber P&P Module with 1 MTP port, black

Interface LC = LC SC = SC	Configuration L = Low Loss Blank = Standard Loss
Fiber Type	
6 = OM1, 62.5/125 Multimode beige LC adapters	
5 = OM2, 50/125 Multimode beige LC adapters	
5L = OM3, XGLO 300 50/125 Multimode aqua adapters	
5V = OM4, XGLO 550 50/125 Multimode aqua adapters	
SM = OS1/OS2, Singlemode blue LC adapters	



PP2-24-LC(X)-01(X) 24 Fiber LC P&P Module with 2 MTP ports, black

Configuration L = Low Loss Blank = Standard Loss
Fiber Type
6 = OM1, 62.5/125 Multimode beige LC adapters
5 = OM2, 50/125 Multimode beige LC adapters
5L = OM3, XGLO 300 50/125 Multimode aqua adapters
5V = OM4, XGLO 550 50/125 Multimode aqua adapters
SM = OS1/OS2, Singlemode blue LC adapters

MTP to MTP Adapter Plates

Siemon MTP Adapter Plates offer a user friendly “pass-through” option for MTP connectors. Fitting within Siemon’s fiber enclosures and VersaPOD vertical patch panels, these plates secure MTP connectors, allowing efficient implementation of MTP to MTP reels and extenders as well as MTP to LC Trunks for direct equipment and patching connections.



High Density

Supports up to 96 fibers per adapter plate - providing up to 1152 fibers in 4U

Flexible Configurations

1, 2, 4, 6 and 8 port versions available, supporting both Singlemode and Multimode

40 Gb/s and 100 Gb/s Ready

Enables simple upgrade path to future 40 Gb/s and 100 Gb/s applications over Multimode 50/125 laser optimized fiber

Popular RIC Adapter Footprint

Fits within RIC, FCP and SWIC Siemon fiber enclosures and VersaPOD vertical patch panels



RIC-F-MP(XX)-01-(X) MTP Adapter Plate, black

Fiber Count
12 = 12 (1 MTP adapter)
24 = 24 (2 MTP adapters)
48 = 48 (4 MTP adapters)
72 = 72 (6 MTP adapters)
96 = 96 (8 MTP adapters)

Key Orientation
Blank = Opposed (key up to key down) black adapters
Q = Opposed (key up to key down) aqua adapters
B = Aligned (key up to key down) gray adapters