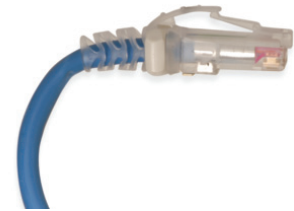
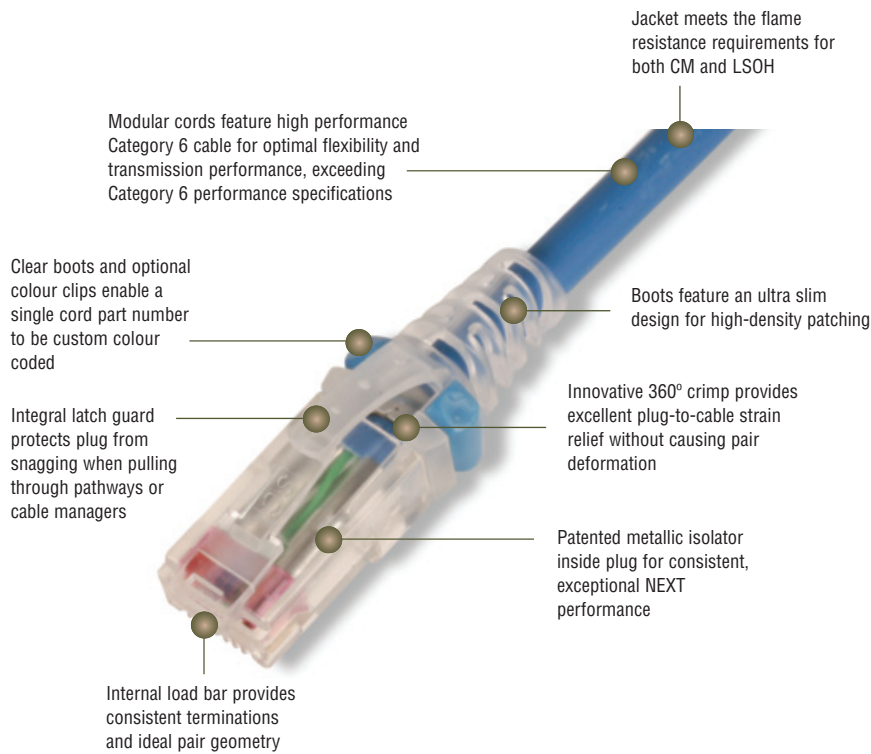


MC[®] 6 UTP Modular Cords - International

Siemon's Category 6 series of modular cords are key components to ensure optimum channel performance of our Category 6 UTP systems. A variety of product enhancements contribute to the cord's superior performance — including 250 MHz rated stranded cordage, a patented crosspair isolator and an innovative 360° crimp, which provides excellent plug-to-cable strain relief without causing pair deformation.

PATCH CORDS, PLUGS & CABLE



Excellent Bend Relief
Boot and integrated strain relief ensures proper bend relief, critical for Category 6 performance



Colour Coding
Optional coloured clips enable field colour coding and can easily be snapped into place without having to disconnect cords



STANDARDS COMPLIANCE

- ANSI/TIA-568-C.2
- ISO/IEC 11801
- IEEE 802.3af (PoE)
- IEEE 802.3at (PoE+)
- IEC 60603-7
- cUL US Listed
- IEC 60332-1, 60754, 61034
- TIA-968-A (formerly FCC Part 68 Subpart F)

PRODUCT INFORMATION

Performance Specifications:

ELECTRICAL	
Contact Resistance	20 mΩ
Input to Output DC Resistance	200 mΩ
Min. Dielectric Withstand Voltage (contact to contact)	1000 V DC or AC peak
Insulation Resistance	500 mΩ
Compatibility	Backwards to cat 5e
Current Rating @ 25° C	1.5 A
Power over Ethernet	Suitable for PoE and PoE+
MECHANICAL – GENERAL	
Operating Temperature	-10 to 60 °C, (14 to 140 °F)
Flammability Rating	UL 94 - V0
Green Features	RoHS, lead-free, halogen-free, PVC free
Contact Materials	Copper alloy with contact plating of 50 micro inches gold or equivalent
Plastic Materials	Flame retardant thermoplastic
Marking	P/N, length, performance level, QC
MECHANICAL – PLUG	
Number of Plug Insertion Cycles	750
Min. Plug Retention Force	50N
Plug Compatibility	Compatible with RJ45 outlets

MECHANICAL – CABLE (STRANDED)	
Wire Size Range (nominal)	26 AWG 7x34 Stranded tinned copper
Cable Construction	UTP
Cable O.D. (nominal)	5.3mm (0.20 in.)
Wiring	T568A/B
Jacket Type	CM/LSOH
Bend Radius	25mm (1.0 in.)

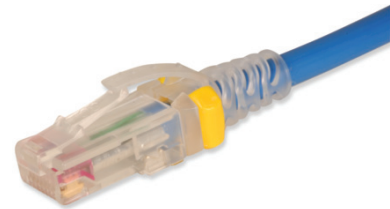
MC 6 UTP Modular Cords

Category 6 MC, double-ended, 4-pair UTP stranded modular patch cord, T568A/B, clear boot.

MC6-(XX)M-(XX)	
Cord Length	Cord Colour
01 = 1m	01 = Black
1.5 = 1.5m	02 = White
02 = 2m	03 = Red
03 = 3m	04 = Grey
05 = 5m	05 = Yellow
7.5 = 7.5m	06 = Blue
	07 = Green
	08 = Violet
	09 = Orange

CLIP-(XX) Colour coding clip, bag of 25

Clip Colour		
01 = Black	04 = Grey	07 = Green
02 = White	05 = Yellow	08 = Violet
03 = Red	06 = Blue	09 = Orange



Because we continuously improve our products, Siemon reserves the right to change specifications and availability without prior notice.

For additional resource information:
Visit our web site at www.siemon.com

North America
Watertown, CT USA
Phone (1) 860 945 4200 US
Phone (1) 888 425 6165 Canada

Europe/Middle East/Africa
Surrey, England
Phone (44) 0 1932 571771

Asia/Pacific
Shanghai, P.R. China
Phone (86) 21 5385 0303

Latin America
Bogota, Colombia
Phone (571) 657 1950