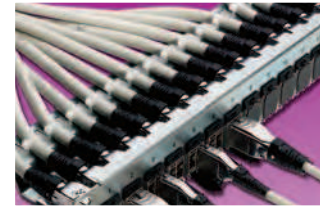


TERA® - MAX® Patch Panels

TERA-MAX 19 inch patch panels provide outstanding performance and reliability in a shielded, high-density modular solution. As outlets are snapped into place, resilient ground tabs assure that each outlet is properly grounded. No secondary outlet grounding operations are required, reducing overall installation time.

Angled TERA-MAX — Allows direct routing of cables to vertical managers, eliminating the need for horizontal cable managers



Cable Management
Integral rear cable manager facilitates the orderly routing of horizontal cables as well as maintaining proper bend radius for optimum performance.

Standard Fit — Panels can be mounted directly on standard 19 inch relay rack or cabinet

Durable — High strength steel with black or metallic finish

Port Identification — Bold port numbering enables quick identification of outlets



Slim Design
Use TERA outlets in TERA-MAX patch panel for telecommunications room applications.

Installation Friendly — Individual modules snap into place, providing integrated grounding without additional steps



Integrated Grounding
Panels feature integrated grounding via resilient ground tabs engaged during module insertion.

TERA-MAX Patch Panels

| Part # | Description |
|----------------|--|
| TM-PNLZ-24-01 | .24-port TERA-MAX panel, black, 1U |
| TM-PNLZ-24 | .24-port TERA-MAX panel, metallic, 1U |
| TM-PNLZA-24-01 | .24-port Angled TERA-MAX panel, black, 1U |
| TM-PNLZA-24 | .24-port Angled TERA-MAX panel, metallic, 1U |
| PNLA-CVR-01 | Angled panel cover, black |



Panels include designation labels, cable ties and mounting hardware.
Note: 1U = 44.5mm (1.75 in.)